

- Office
- Reception
- Core



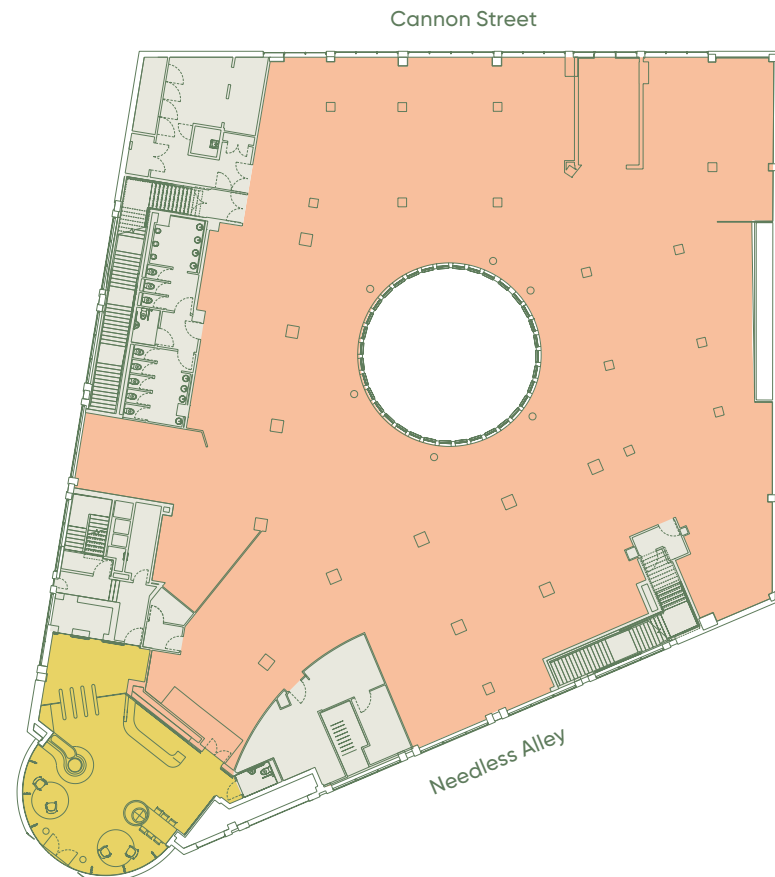
For indicative purposes only.
Not to scale.

Schedule of areas

Floor	Condition	sq ft	sq m
9th	Cat A	1,849	172
8th	Cat A	5,465	508
7th	Fully Fitted	5,470	508
6th	Cat A	5,273	490
5th	Let	–	–
4th	Cat A	8,803	818
3rd	Let	–	–
2nd	Cat A	14,348	1,333
1st	Let	–	–
Ground	Cat A	14,662	1,362
Total		55,870	5,191

Ground floor

14,662 sq ft / 1,362 sq m



* In accordance with International Property Measurement Standards.

● Office

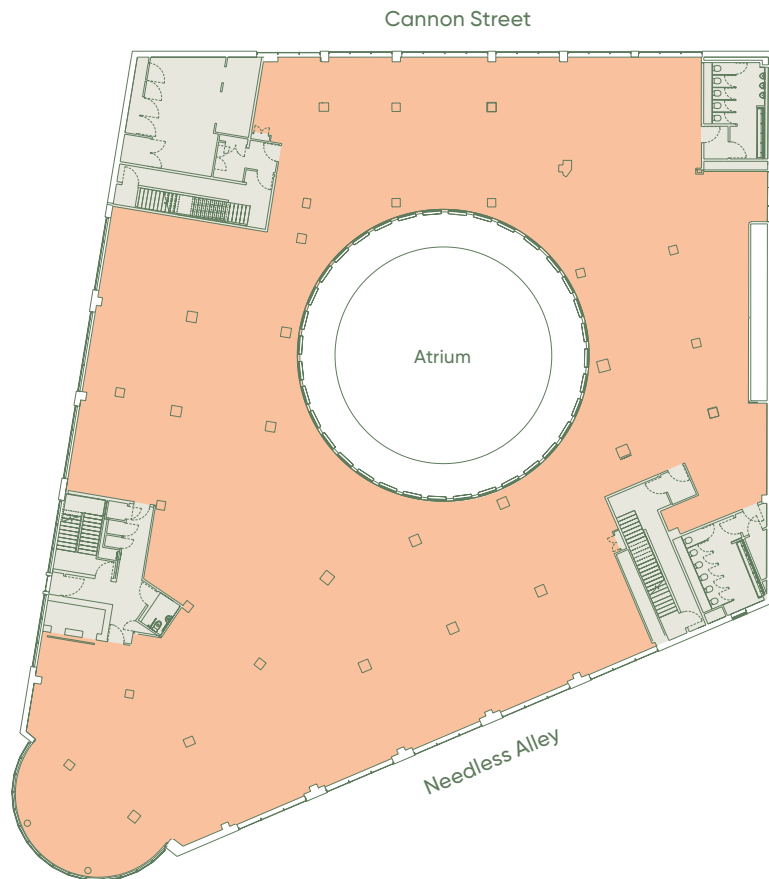
● Core



For indicative purposes only.
Not to scale.

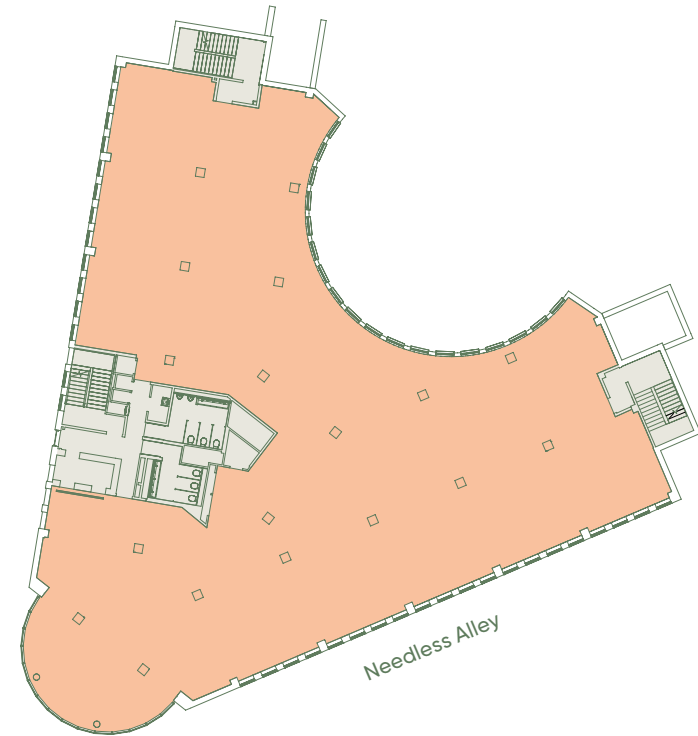
2nd floor

14,348 sq ft / 1,333 sq m



4th floor

8,803 sq ft / 818 sq m



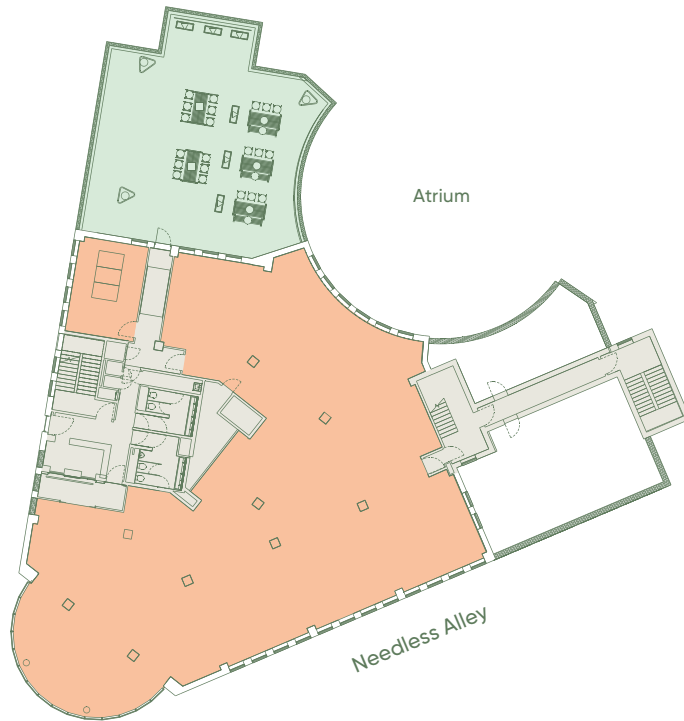
- Office
- Core
- Terrace



For indicative purposes only.
Not to scale.

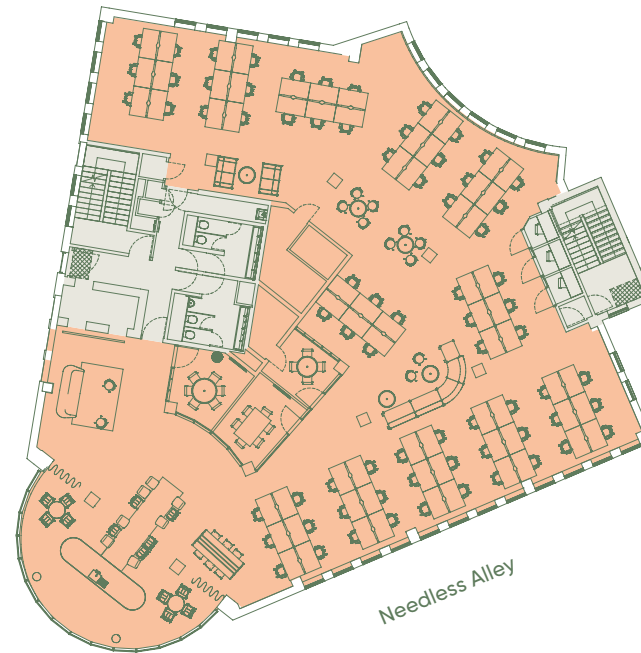
6th floor

5,273 sq ft / 490 sq m



7th floor

5,470 sq ft / 508 sq m



Open plan desks	72
4 person meeting room	01
6 person meeting rooms	02
Phone booths	03
Kitchen	01
Breakout areas	04
Total working positions	72

Office

Core

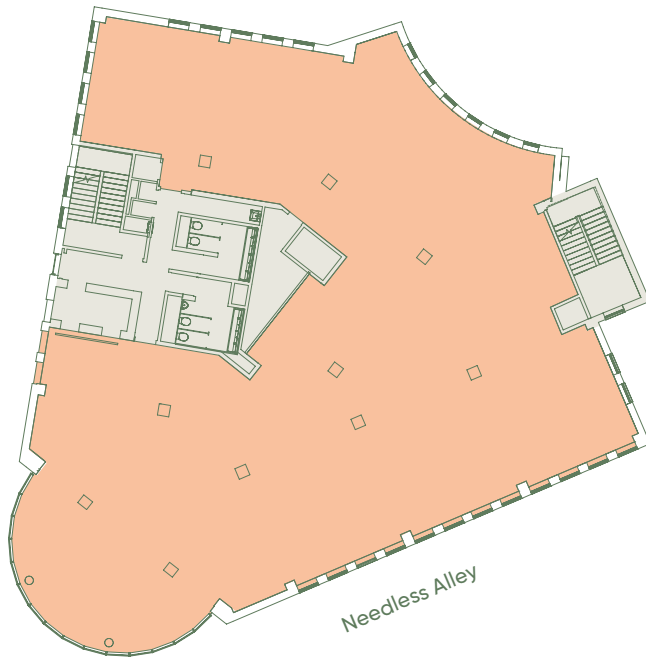
Terrace



For indicative purposes only.
Not to scale.

8th floor

5,465 sq ft / 508 sq m



9th floor

1,849 sq ft / 172 sq m

